

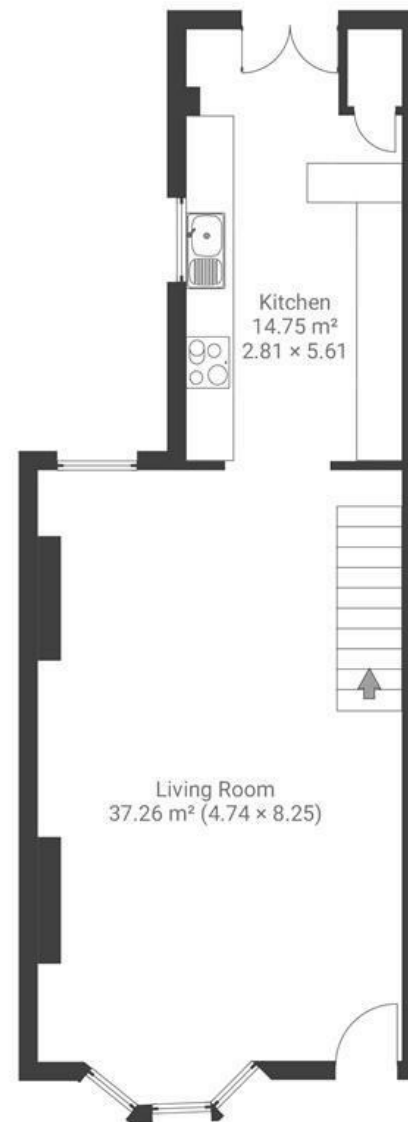
Bloomfield Road

BRISLINGTON

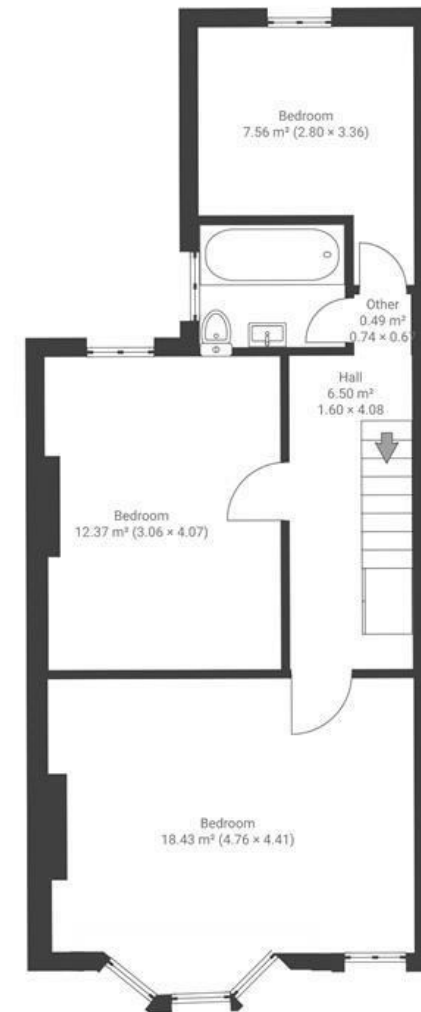
APPROXIMATE FLOOR AREA
103.5 SQM / 1114 SQFT



GROUND FLOOR



FIRST FLOOR



Boardwalk

Bloomfield Road

, BRISTOL

£

£475,000



BS4 3QR

zzz

3 Bedrooms



1 Bathrooms

"Bloomfield Road has been a truly wonderful place to call home. We have loved living here for over eight years, surrounded by friendly neighbours and a vibrant local community. The house has a lovely, homely feel, with an open-plan layout downstairs that has been ideal for both family life and entertaining. Natural light fills the home throughout the day, and the raised garden deck provides the perfect spot to relax and enjoy the last of the evening sun."

